



GAT MONTHLY MEMBERSHIP PROGRESS REPORT

Results as of: 4/30/2024

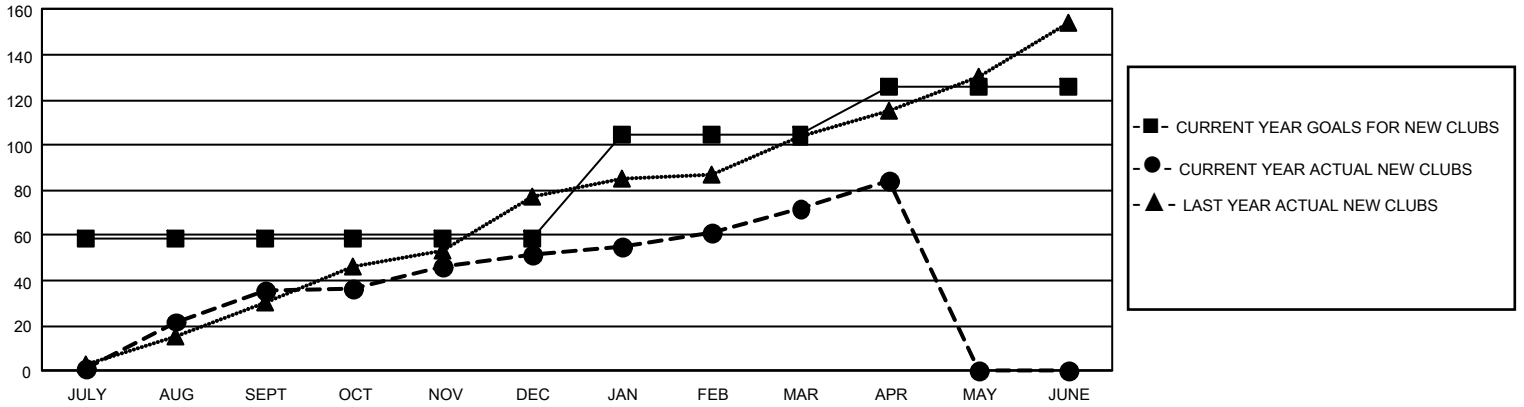
GMT Constitutional Area 6 - S, Group A

REPORT DOES NOT INCLUDE CLUBS IN UNDISTRICTED AREAS.

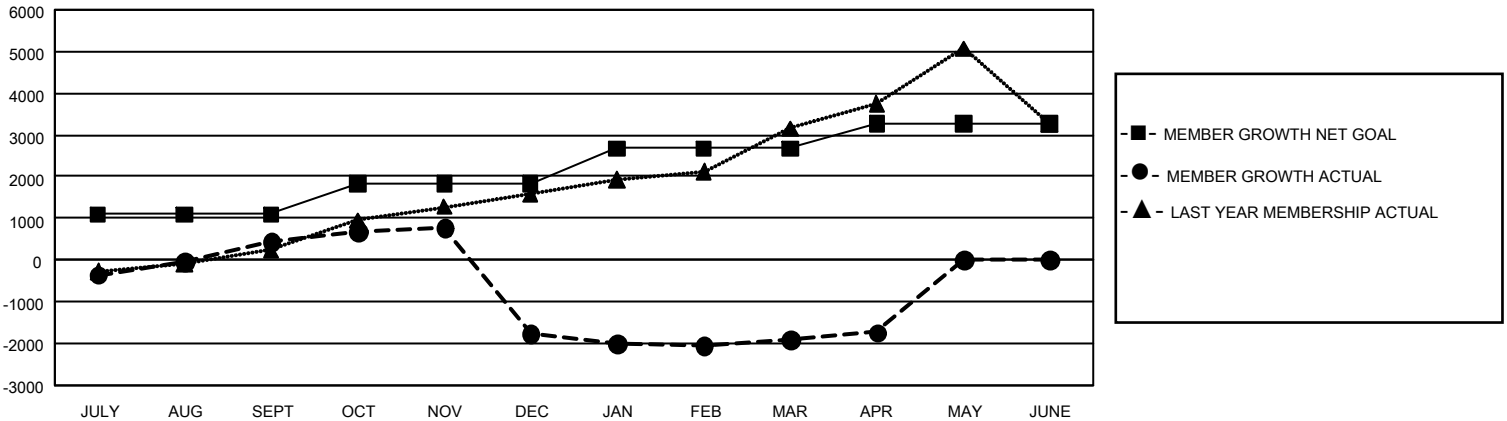
Clubs			
RESULTS FOR 2023-2024			
QUARTER	NEW CLUB GOAL	NEW CLUBS	DROPPED CLUBS
JULY/AUG/SEPT	177	36	2
OCT/NOV/DEC	0	16	50
JAN/FEB/MAR	138	20	31
APR/MAY/JUNE	63	12	4

Members			
RESULTS FOR 2023-2024			
QUARTER	MEMBER GROWTH NET GOAL	MEMBER GROWTH ACTUAL	DROPPED MEMBERS ACTUAL (including transfers)
JULY/AUG/SEPT	1099	2,160	1,361
OCT/NOV/DEC	720	1,941	3,768
JAN/FEB/MAR	858	2,057	1,869
APR/MAY/JUNE	598	558	311

GOALS AND ACTUAL NEW CLUBS CUMULATIVE



GOALS AND ACTUAL MEMBERS CUMULATIVE



DROPPED CLUBS: 87	793 CLUBS OF 1,544 ADDED 1 OR MORE NEW MEMBERS	GENDER DISTRIBUTION	
		MALE 30,100 (75.51%) FEMALE 9,756 (24.47%) NON BINARY 0 (0.00%) PREFER NOT TO ANSWER 8 (0.02%)	
DROPPED MEMBERS		CLICK HERE FOR CUMULATIVE MEMBERSHIP DATA	
DECEASED 66 CLUB CANCELLED 2,003 OTHER 5,239 TOTAL 7,308	TOTAL FAMILY UNIT MEMBERS 13,505 FAMILY MEMBERS PAYING HALF DUES 8,549		